



Scrap Raw Materials Specification Manual

CMC Steel New Jersey

SCRAP RAW MATERIALS SPECIFICATION MANUAL

TABLE OF CONTENTS

INTRODUCTION	3
GENERAL TERMS & CONDITIONS	4
GENERAL RAW MATERIALS SPECIFICATIONS	7
ENVIRONMENTAL ASPECTS	9
CLOSED CONTAINERS/SEALED UNITS	11
RADIOACTIVE RAW MATERIALS.....	12
OTHER UNACCEPTABLE MATERIAL	14
RAW MATERIALS SPECIFICATIONS	
PLATE & STRUCTURAL	15
#1 HEAVY MELT	16
SHREDDED SCRAP	18
MIXED TURNINGS	19
CAST IRON	20
QUALITY/INSPECTION POLICY AND PROCEDURES.....	21
RAW MATERIALS SPECIFICATION, SAFETY AND ENVIRONMENTAL COMPLIANCE AND AGREEMEN	24

INTRODUCTION

CMC Steel New Jersey wishes to consistently provide the best ferrous raw materials market to its suppliers. In order to pay competitive prices and provide the best market for ferrous raw materials, it is imperative that the quality of raw materials purchased produces a clean, dense charge for our electric furnace. Dirty raw materials, oversize raw materials, and contaminated raw materials cannot be used to produce quality finished steel products at competitive prices.

This raw materials manual has been provided to let you, CMC Steel New Jersey's suppliers of raw materials, know how we operate and know what is acceptable quality and what is not acceptable quality in each raw material commodity. Your efforts in applying these standards to every load of raw materials are appreciated and will continue to be rewarded. All CMC Steel New Jersey personnel involved in the purchasing, receiving, grading or unloading of raw materials resources are taught to use the Golden Rule in applying the standards and policies set-forth in this manual. The success of any policy or standard is dependent upon the good judgment and fair mindedness of each person involved in its application. Our objective is to treat every supplier courteously and fairly each time.

The standards used in this manual are derived from the Institute of Scrap Recycling Industries' (ISRI) specifications and have been modified to meet CMC Steel New Jersey's particular raw materials requirements.

GENERAL TERMS AND CONDITIONS

- A. **PURCHASING OF RAW MATERIALS** is handled by the Raw Materials Department. Raw Materials Department may be contacted at 732.343.4730.
- B. **PRICES** are quoted for each raw material commodity primarily at the beginning of each month and may be applicable for (a) the entire month; (b) the remainder of that particular month; (c) for a given period of time to be specified; or, (d) for a specific quantity to be delivered by a specific date. A purchase contract with a corresponding purchase order number (P.O.) will be issued for specific grades and quantities to be completed within a specific period of time, generally for one calendar month. Balances on any P.O. not shipped by the specified completion date may be cancelled or extended at the discretion of the CMC Steel New Jersey Raw Materials Department. **(All prices are quoted in Gross Tons and all quantities expressed on a P.O. are in Gross Tons.)**
- C. **DELIVERY** may be made in truckload (at agreed upon minimum weights) or carload quantities (at agreed upon minimum weights) as specified at the time of purchase.
- D. **SCALE HOUSE HOURS:** Please contact Raw Materials Department for current scale hours.
- E. **RECEIVING AND GRADING** – CMC Steel New Jersey's weights and grading will govern final settlement for all raw materials purchases. A current CMC Steel New Jersey purchase order must be on file for each shipment. No raw materials will be received at the scale unless:
1. A purchase order number has been issued to the supplier by an authorized Raw materials representative and must be referenced on all correspondence and shipping documents.

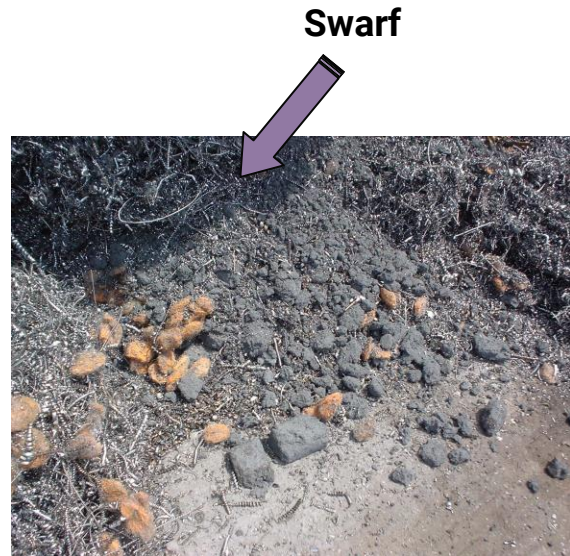
2. In the case of truck delivery, the driver must provide the Scale Operator with a completed CMC NEW JERSEY-TRUCK DELIVERY FORM providing:
 - a. Supplier/Broker#
 - b. Purchase Order #
 - c. Truck Carrier & Truck #
 - d. Grade Code & Grade Description
 - e. Shipper Weights
3. In the case of rail shipment, the shipper must notify CMC Steel New Jersey Raw materials Department prior to the arrival of the car at CMC Steel New Jersey.
4. We will not accept rail shipments without complete prior notification. Shipments without prior notice may be returned to origin at the supplier's expense or supplier may be responsible for demurrage charges incurred while the car's origin is being determined. In the event a shipment is received without prior notification and is unloaded, for whatever reason, CMC Steel New Jersey's grading will govern settlement.
5. The Scale Administrator on duty is responsible for inspecting the top of every raw materials shipment and determining if it conforms to the shipper's statement as to what grade was shipped. The Scale Administrator will note the grade (i.e. shredded, #1HMS, etc.) on the scale ticket. The Scale Administrator will notify a Scrap Inspector, Scrap Yard Supervisor, Melt Shop Manager who will then notify the Raw Materials Department of any substandard raw materials shipment. The shipper will then be notified by the Raw materials Department and the material will be held for downgrading upon supplier's acceptance or rejected at the sole discretion of CMC Steel New Jersey. In all cases, shipments held for disposition (downgrade/radiation) must be cleared within (24) hours except weekends or holidays, with any detention, demurrage, or other charges being the sole responsibility of the supplier.
6. After a shipment is weighed in, it will be the responsibility of the raw materials inspector and the crane operator on duty to inspect the remainder of the shipment and determine whether it meets the quality standards as set forth in CMC Steel New Jersey's RAW MATERIALS SPECIFICATION MANUAL.

7. Disputes over substandard material, contracts, grading, unloading, etc., on raw materials delivered after normal business hours (8:00am to 5:00pm, Monday through Friday) will be handled during the next day's normal business hours, and the shipment will not be unloaded, or if unloading has begun, will not be completed until the appropriate personnel have been contacted and have had an opportunity to inspect the load during normal daylight hours and come to a decision regarding acceptability.
 8. Rejected truckloads or carloads of raw materials become the supplier's responsibility at the time of notification. The Raw materials Department will make every effort to assist the supplier and minimize the negative effects of a problem shipment.
 9. All freight charges or demurrage charges for a rejected shipment are the responsibility of the shipper, and will either be billed to the shipper, or deducted from a current or future shipment.
- F. **TRUCK UNLOADING** will be accomplished as carefully as possible with respect to the driver's safety and care of his truck and trailer and surrounding people and property.
- G. **SAFETY** is paramount at CMC Steel New Jersey. Only the driver will be allowed into the raw materials storage area. The driver must have and use approved head and eye protection (**hard hat, safety glasses, safety shoes**) at all times while within the CMC Steel New Jersey scrap yard area. Shorts, sleeveless shirts and open toed shoes are not permitted at CMC Steel New Jersey. The driver must not leave the immediate area surrounding his truck, and must stay clear of the crane unloading his truck as well as other equipment operating in the area. The driver's strict attention to his surroundings is mandatory. **CB Radios required on all trucks.**
- H. **PAYMENTS** are made by check or ACH and are issued promptly per the payment terms agreed to and noted on the P.O. Please do not send invoices to CMC Accounts Payable Shared Services as we pay based on CMC's receiving weight tickets. During the end of month closing periods, there could be a slight delay in issuing checks.

GENERAL RAW MATERIALS SPECIFICATIONS

In order to better understand the terms used in this plan, the following definitions are provided:

CLEANLINESS: All grades shall be free of dirt, non-ferrous metals, excessive rust and corrosion, or foreign material of any kind. However, the terms “free of dirt, non-ferrous metals or foreign material of any kind” are not intended to preclude the accidental inclusion of negligible amounts where it can be shown that the amount is unavoidable in the customary preparation and handling of the particular grade involved. CMC Steel New Jersey will not accept any non-metallic or steel by-products such as mill scale, slag, grinding dust or swarf.



RESIDUAL ALLOYS: Wherever the term “free of alloys” is used in the classifications given herein, it shall mean that any alloys contained in the steel are residual and have not been added for the purpose of making alloyed steel.

OFF-GRADE MATERIAL: The inclusion in a shipment of a particular grade of iron or steel raw materials of a negligible amount of metallic material which exceeds to a minor degree the applicable size limitations or which fails to a minor extent to meet the applicable requirements as to quality or kind of material, shall not change the classification of the shipment, provided it can be shown that the inclusion of such off-grade material is unavoidable in the customary preparation and handling of the grade involved. The final determination of these occurrences are at the sole discretion of appropriate CMC Steel New Jersey personnel involved in the inspection, grading and unloading of raw materials.

DRUMS: Drums of any size will not be accepted.

DEVIATIONS: Deviations from the general classifications of iron and steel raw materials given herein may be allowed by mutual written agreement between CMC Steel New Jersey Raw Materials Department and the supplier.

ENVIRONMENTAL ASPECTS

Part of CMC Steel New Jersey's "It's Got To Be Right!" philosophy is caring about the needs of the community, which begins with the environment; one of clean air, land and water. Environmental issues are managed at CMC Steel New Jersey by an on-site staff under the direction of the Environmental Manager. Any environmental question or issue should be directed to the Environmental Department at 732.401.1062; with the Raw materials Department advised of the final resolution by the CMC Steel New Jersey Environmental Department.

Hazardous Air Pollutants (HAP) Emissions: Contaminants such as chlorinated plastics, free organic liquids, lead and mercury are not appropriate or desired for the production of steel in EAF facilities. However, these contaminants can be found in the scrap steel that is the basic feedstock for the production of new steel.

EPA has identified EAF facilities as potential sources of HAP emissions and on December 28, 2007 promulgated final regulations (codified at 40 CFR Part YYYYYY) intended to control or minimize such emissions. The regulations require EAF facilities, among other things, to restrict the use of certain scrap purchased as production feedstock to minimize the amount of specified contaminants in such scrap.

CMC Steel New Jersey is committed to complying with the requirements of the EAF Area Source Rule and to the goal of removing at least 80% of mercury convenience-light switches from motor vehicle scrap. CMC is also committed to minimizing to the extent practicable the presence of other contaminants in scrap that may result in the emission of hazardous air pollutants (HAP).

CMC Steel New Jersey will only purchase motor vehicle scrap from scrap vendors that participate in The National Vehicle Mercury Switch Removal Program (NVMSRP) or another EPA-approved program designed to minimize the presence of mercury in scrap.

Scrap materials must be depleted to the extent practicable of undrained used oil filters, chlorinated plastics, and free organic liquids at the time of charging to the furnace.

Lead-containing components of scrap, such as batteries, battery cables, and wheel weights, must be removed, to the extent practicable, prior to charging in the furnace unless the scrap is used to produce leaded steel.

PLEASE PAY STRICT ATTENTION TO THIS ISSUE.

CLOSED CONTAINERS/SEALED UNITS

SAFETY of our employees comes first and foremost along with protecting our property/equipment. Closed containers and sealed units are a serious explosion hazard, which may result in the loss of life, limb, and/or property. Any shipper that fails to address this issue may result in the suspension or termination as an approved raw materials supplier to CMC Steel New Jersey.

Shipments containing ANY "CLOSED CONTAINERS" WILL BE REJECTED.

CLOSED CONTAINERS: No closed containers will be accepted. These include, but are not limited to, propane cylinders, freon canisters, torque converters, sheared pipe (has to be open on one end), gear boxes, shock absorbers, compressed gas cylinders, fire extinguishers, hydraulic cylinders, munitions raw materials, air compressor tanks, fuel tanks, acetylene cylinders, and any other sealed unit or closed container.



PLEASE PAY STRICT ATTENTION TO THIS ISSUE.

RADIOACTIVE RAW MATERIALS

CMC Steel New Jersey protocol requires that any shipment of raw materials that sets off our radiation detection equipment will be rejected and any expenses incurred will be charged to the account of the shipper. This may result in the supplier being forbidden to ship raw materials to CMC Steel New Jersey until the supplier demonstrates that efforts have been made to correct the problem. In addition, CMC Steel New Jersey will not purchase any “decontaminated” raw materials regardless if it was performed by the U.S. Government or U.S. Government approved contractor or even if you have a “certificate of decontamination” for the raw materials.

Any material with readings above 2000 uR/hr or 2 mR/hr must be reported to the New Jersey Department of Health and Environmental Control (SCDHEC) for their disposition; all related costs are the responsibility of the shipper. We encourage suppliers to install and properly maintain radiation detection equipment and establish a protocol to eliminate radioactive raw materials from being purchased at their facility. If you have any questions or need assistance with your procedures, please contact our Environmental Manager at 732.401.1062.

The New Jersey Department of Health and Environmental Control will be notified prior to returning any load to the supplier.

Potential Radiation Alarms

CMC Steel New Jersey has radiation detectors located at the rail and truck scales that are designed to detect any radiation activity which may occur when incoming shipments of raw materials are delivered.

The system is designed to solve most of the problems, but it is impossible to prevent any spurious alarms. These alarms are not false alarms because they are caused by a real increase in radiation level. In most cases, these alarms have the same characteristics as a real alarm, but CMC Steel New Jersey prefers to call them nuisance alarms.

The detectors contain sophisticated data processing that minimizes and differentiates the real from the nuisance alarms.

CMC Steel New Jersey has a policy prohibiting off-loading any type of raw materials that causes the radiation detector to alarm, which may include nuisance alarms. Raw Materials nuisance alarms will be treated as real alarms because the potential for a radioactive source can be buried in a load shielding the actual readings from the source; therefore, a load will be rejected. Non-raw materials nuisance alarms will be investigated and can be accepted if traces of radioactive material do not trigger danger levels. This procedure is outlined in our raw materials radiation protocol.

Here's a listing of nuisance alarms containing traces of radioactive material that are known to be common:

- **Contaminated Pipe** - containing potash or oil that may carry radium or thorium radioactive materials.
- **Medical Alarms** – truck drivers or plant personnel that may be injected for medical treatments small traces of radioactive materials (i.e. barium enema)
- **Firebrick** – containing thorium.
- **Calamite** – containing traces of uranium, potassium, and thorium.
- **Concrete** – containing traces of potassium in significant volume.
- **Voids** – spacing between loads in a rail car or dump truck.
- **Other materials: Alum, Corrosive solids, ceramics, fire clay, pyro blocks, refractories, propane gas, insulation, bonding pour tile, fiberboards, ladle brick, oxytherm R1, fluidox 141, bonding mortar;** and materials that contain naturally occurring material (i.e. – granite rock, dirt).

OTHER UNACCEPTABLE MATERIAL

NO mill scale, slag, grinding dust or swarf.

NO asbestos - typically in brake shoes, pipe insulation and hose insulation material.

NO tires (or tire pieces) of any type.

NO free-flowing oil (either on the surface of raw materials or containerized in the raw materials)

NO units containing PCB's of any type (this includes capacitors, transformers, ballast, etc.).

NO batteries of any type. This also includes Nickel Cadmium, Mercury, Lithium and other rechargeable batteries.

NO items containing freon (i.e. charged AC units or other type of CFC's).

NO other types of refrigerants (e.g. ammonia).

NO hazardous wastes and no material containing hazardous wastes or hazardous waste residues.

NO transformers.

NO offensive odors (mercaptan coated natural gas lines or propane lines/tanks).

NO flammable material (oil, grease, fuel, etc.).

NO liquids of any type.

NO foreign materials/ non-metallics (i.e. wood, insulation, concrete, dirt, plastic, etc.).

NO electric motors

NO concrete

RAW MATERIALS SPECIFICATIONS

GRADE:	Plate and Structural																
GRADE CODE:	30006638																
DIMENSIONS:	Not less than ¼" in thickness Not over 60" in length and 24" width 5' P&S																
MINIMUM DENSITY: (Lbs. per cubic ft.)	N/A																
MAXIUM WEIGHT PER PIECE:	900 lbs. or less																
DESCRIPTION:	Clean steel plates, structural shapes, crop ends, shearing's railroad scrap (i.e. RR wheels, cut rail, other track material).																
MAY INCLUDE:	N/A																
RESTRICTIONS:	No mercury in any form will be accepted. No pipe of any kind is acceptable in P&S.																
ELEMENT:	<table border="0"> <tr> <td>Copper</td> <td>.20% maximum</td> </tr> <tr> <td>Nickel</td> <td>.10% maximum</td> </tr> <tr> <td>Chrome</td> <td>.10% maximum</td> </tr> <tr> <td>Tin</td> <td>.03% maximum</td> </tr> <tr> <td>Phosphorus</td> <td>.04 maximum</td> </tr> <tr> <td>Sulphur</td> <td>.04 maximum</td> </tr> <tr> <td>Molybdenum</td> <td>.05% maximum</td> </tr> <tr> <td>Mercury</td> <td>.00%</td> </tr> </table>	Copper	.20% maximum	Nickel	.10% maximum	Chrome	.10% maximum	Tin	.03% maximum	Phosphorus	.04 maximum	Sulphur	.04 maximum	Molybdenum	.05% maximum	Mercury	.00%
Copper	.20% maximum																
Nickel	.10% maximum																
Chrome	.10% maximum																
Tin	.03% maximum																
Phosphorus	.04 maximum																
Sulphur	.04 maximum																
Molybdenum	.05% maximum																
Mercury	.00%																
NOTE:	Material must be free of dirt, concrete, wood, and / or lesser grades of material. Oversized or bulky material is not acceptable.																

RAW MATERIALS SPECIFICATIONS

GRADE:	#1 Heavy Melt																
GRADE CODE:	30006585																
DIMENSIONS:	<p>Must not exceed 60" in length or 24" in width Must be ¼" minimum thickness but not to exceed 12" in thickness Rebar must be prepared to a maximum length of 36" Pipe with a diameter of 18" or greater must be prepared (split) in a half-moon fashion.</p>																
MINIMUM DENSITY: (Lbs. per cubic ft.)	55																
MAXIMUM WEIGHT PER PIECE:	900 lbs. or less																
DESCRIPTION:	Wrought iron and/or steel scrap. Properly prepared automotive scrap is acceptable. Leaf springs need to be cut free from automotive and truck rears. Up to 5% rebar properly prepared in maximum length of 36" and mixed throughout the load is acceptable.																
MAY INCLUDE:	N/A																
RESTRICTIONS:	<p>No stainless scrap. No electric motors. No sealed containers (including shock absorbers). No resulfurized scrap, free of nonferrous materials. No scrap containing mercury, i.e. limit switches, medical waste, thermometers, and thermostats. No mercury in any form will be accepted. No piece over 900 lbs. will be accepted.</p>																
ELEMENT:	<table border="0"> <tr> <td>Copper</td> <td>.30% Maximum.</td> </tr> <tr> <td>Nickel</td> <td>.10% Maximum</td> </tr> <tr> <td>Chrome</td> <td>.12% Maximum</td> </tr> <tr> <td>Tin</td> <td>.015% Maximum</td> </tr> <tr> <td>Phosphorus</td> <td>.04% Maximum</td> </tr> <tr> <td>Sulphur</td> <td>.04% Maximum</td> </tr> <tr> <td>Molybdenum</td> <td>.05% Maximum</td> </tr> <tr> <td>Mercury</td> <td>.00%</td> </tr> </table>	Copper	.30% Maximum.	Nickel	.10% Maximum	Chrome	.12% Maximum	Tin	.015% Maximum	Phosphorus	.04% Maximum	Sulphur	.04% Maximum	Molybdenum	.05% Maximum	Mercury	.00%
Copper	.30% Maximum.																
Nickel	.10% Maximum																
Chrome	.12% Maximum																
Tin	.015% Maximum																
Phosphorus	.04% Maximum																
Sulphur	.04% Maximum																
Molybdenum	.05% Maximum																
Mercury	.00%																

NOTE:

Non-conforming material will be reason for rejection / non-acceptance. Copper in any form (i.e. electric motors, wire, piping etc.) is not acceptable. Non-metallic, (i.e. wood, paper, concrete, brick, rubber, plastic, insulation, dirt, etc.) are not acceptable. Material must be free of lead, closed containers, brake pads, torque converters, counterweights, munitions, aluminum, alloy steels, oil and / or #2 HMS. Oversized and / or bulky material is unacceptable.

RAW MATERIALS SPECIFICATIONS

GRADE:	Shredded Scrap	
GRADE CODE:	30006642	
DIMENSIONS:	N/A	
MINIMUM DENSITY: (Lbs. per cubic ft.)	70	
MAXIMUM WEIGHT PER PIECE:	N/A	
DESCRIPTION:	Must consist of homogenous iron & steel scrap, magnetically separated. Must originate from automobiles, unprepared #1 HMS, #2 HMS miscellaneous baling, and sheet scrap.	
MAY INCLUDE:	N/A	
RESTRICTIONS:	<p>No scrap containing mercury, i.e. limit switches, medical waste, thermometers, and thermostats.</p> <p>No Mercury in any form will be accepted.</p>	
ELEMENT:	Copper	.20% Maximum
	Nickel	.10% Maximum
	Chrome	.10%Maximum
	Tin	.015% Maximum
	Phosphorous	.04% Maximum
	Sulphur	.04% Maximum
	Molybdenum	.05%Maximum
	Mercury	.00%
NOTE:	Material must be free of dirt, concrete, grindings, cast Iron, turnings, rubber, plastics, chain link fences, borings, fabric, and other combustible material leading to excessive pollution. Municipal scrap (Pre and post burnt) is unacceptable.	

RAW MATERIALS SPECIFICATIONS

GRADE:	Turnings																		
GRADE CODE:	30006646																		
DIMENSIONS:	N/A																		
MINIMUM DENSITY: (Lbs. per cubic ft.)	N/A																		
MAXIUM WEIGHT PER PIECE:	N/A																		
DESCRIPTION:	Clean short steel or wrought iron turnings, drillings, or screw cuttings.																		
MAY INCLUDE:	May include any such material whether resulting from crushing, raking, or other processes.																		
RESTRICTIONS:	<p>No cast iron borings will be accepted.</p> <p>No mercury in any form will be accepted.</p> <p>No aluminum or stainless will be accepted.</p>																		
ELEMENT:	<table border="0"> <tr> <td>Copper</td> <td>.30% Maximum</td> </tr> <tr> <td>Nickel</td> <td>.10% Maximum</td> </tr> <tr> <td>Chrome</td> <td>.12% Maximum</td> </tr> <tr> <td>Tin</td> <td>.03% Maximum</td> </tr> <tr> <td>Phosphorous</td> <td>.04% Maximum</td> </tr> <tr> <td>Sulphur</td> <td>.08% Maximum</td> </tr> <tr> <td>Molybdenum</td> <td>.05% Maximum</td> </tr> <tr> <td>Lead</td> <td>.00%</td> </tr> <tr> <td>Mercury</td> <td>.00%</td> </tr> </table>	Copper	.30% Maximum	Nickel	.10% Maximum	Chrome	.12% Maximum	Tin	.03% Maximum	Phosphorous	.04% Maximum	Sulphur	.08% Maximum	Molybdenum	.05% Maximum	Lead	.00%	Mercury	.00%
Copper	.30% Maximum																		
Nickel	.10% Maximum																		
Chrome	.12% Maximum																		
Tin	.03% Maximum																		
Phosphorous	.04% Maximum																		
Sulphur	.08% Maximum																		
Molybdenum	.05% Maximum																		
Lead	.00%																		
Mercury	.00%																		
NOTE:	Material must be free of high alloy steels, excessive oil, paper, plastics, and springy, bushy, matted material. Badly oxidized material will not be accepted. Foreign material such as grindings, shot blast or mill scale will be cause for rejection. No fines of any kind can be mixed in with the turnings.																		

RAW MATERIALS SPECIFICATIONS

GRADE:	Cast Iron
GRADE CODE:	30006631
DIMENSIONS:	24" x 30" Max.
MINIMUM DENSITY: (Lbs. per cubic ft.)	N/A
MAXIMUM WEIGHT PER PIECE:	No piece to exceed 200 lbs. in weight.
DESCRIPTION:	Clean heavy cast iron scrap that has been broken under 24" Including pipes (free of lead joints), plates, castings, radiators, boilers, automotive scrap (i.e. drums and rotors), sewer grates, manhole covers and frames.
MAY INCLUDE:	N/A
RESTRICTIONS:	No mercury in any form will be accepted.
ELEMENT:	Phosphorous .075% Maximum Sulphur .10% Maximum
NOTE:	Non-conforming material will be reason for rejection / non- acceptance. Copper in any form (i.e. electric motors, wire, piping, etc.) is not acceptable. Non-metallics (i.e. wood, paper, concrete, brick, rubber, plastic, insulation, dirt, etc.) are not acceptable. Material must be free of lead, brass, closed containers, brake pads, torque converters, and aluminum. Oversized and / or bulky material is unacceptable.

RAW MATERIALS QUALITY/INSPECTION POLICY AND PROCEDURES

Raw material quality is the key to the success of CMC Steel New Jersey, and therefore, maintaining strict control standards is a priority. We clearly understand that a raw material by its nature, is a unique commodity, and will work with all of our suppliers to ensure our standards are fair and equitable.

To complement our Raw materials Specification Manual, which will be provided to all suppliers, we have implemented the following:

Scrap Inspection:

1. Every truck or railcar which enters our facility will be inspected at our scales, pass through radiation detection, and be inspected by trained inspectors when dumped or unloaded. No raw materials will be received without a Purchase Order.
 - a. Scrap inspection will be required also to determine whether there is an obvious presence of free organic liquids, chlorinated plastics, or lead-containing components. Records of scrap inspections will be maintained on site for two years. Scrap inspection records shall include the identity of the scrap provider for any load that fails visual inspection. Foreign materials will be removed to the extent practicable prior to charging to the furnace, and the scrap supplier will be subject to corrective action.
 - b. Turnings and other forms of scrap that were generated as a result of the processing of metal with use of cutting, lubricating or cooling fluids will be visually inspected prior to charging to the furnace to ensure that such scrap does not contain free organic liquids.
 - c. Scrap that has been processed through a shredder that utilizes magnetic or density separation techniques to separate ferrous and non-ferrous materials will be presumed to be depleted scrap of chlorinated plastics and lead to the extent practicable.

- d. CMC will conduct a review of the End of Life Vehicle Solutions (ELVS) database to confirm that the motor vehicle scrap provider is enlisted as a participating member in the National Vehicle Mercury Switch Removal Program (NVMSRP). Semi-annual review of the ELVS database will also be conducted to confirm that the scrap provider remains identified as an NVMSRP participant. If CMC reasonably believes, either as a result of inspection, site visits, or review of the ELVS database or by other means, that a scrap supplier is not taking appropriate steps to minimize the presence of mercury switches in scrap from end-of-life vehicles, the facility shall: see statement 4 –5a.

Failing to Meet Standards:

2. Any loads failing to meet our standards, as outlined, will be rejected. If the load is acceptable scrap but does not match the intended purchased grade, it will be at the discretion of CMC Steel New Jersey whether to accept the load as a downgrade or to reject the load. If CMC Steel New Jersey chooses to downgrade the load, then the supplier must determine whether to return the load or accept the downgraded price.
3. For each load rejected or downgraded, CMC Steel New Jersey Raw Materials Inspectors will notify the Raw Materials Department for discussion with the Supplier. All discussions with Suppliers will be through the Raw Materials Department.

Failure to Get it Right:

4. Ongoing rejections and downgrades are costly and inefficient for both suppliers and CMC Steel New Jersey. To control the quality of our raw materials and to be consistent with our suppliers, we have developed the CMC Steel New Jersey Raw Materials Specification Manual along with the following criteria for remaining an approved supplier.

5. Recommendation to disqualify a supplier will be based on serious or repeated rejections and the results of audits and/or poor order completion. The number of warnings and rejections that will result in disqualification of a vendor depends on the amount of raw materials supplied and the seriousness of the incident(s).
 - a. If repeated quality or environmental violations, the supplier will be asked to meet/discuss with the Raw Material Department and/or the Melt Shop Management of CMC Steel New Jersey with an outline (either verbal or written) for corrective action including internal control standards necessary to meet CMC Steel New Jersey's Raw Material Specifications and corrective action steps.



SCRAP MANAGEMENT PLAN, SAFETY AND ENVIRONMENTAL COMPLIANCE AND AGREEMENT

The undersigned Seller has read CMC Steel New Jersey's Raw Materials Specification. This includes General Terms and Conditions, Environmental Issues including restrictions of raw materials containing free organic liquids, chlorinated plastics, lead and lead containing components, and mercury switches Closed Containers/Sealed Units, Radioactive Raw Materials, Other Unacceptable Material and Raw Materials Specifications.

Seller acknowledges that CMC Steel New Jersey may not accept any shipment in whole or in part that does not meet the conditions and specifications described in the specification document. Seller also acknowledges that vendors found to violate this Agreement may be disqualified from supplying scrap materials to CMC Steel New Jersey.

Although CMC Steel New Jersey will exercise reasonable effort to inspect scrap shipments, materials supplied can contain constituents not readily detected during normal inspection, which expose the company to hazards associated with use. Such constituents may include, for example, sealed containers, radiation sources, hazardous volatiles, free organic liquids, chlorinated plastics, lead and lead-containing components, mercury from motor vehicle switches, etc. In all cases, CMC Steel New Jersey's acceptance of any shipment shall not constitute any waiver of its rights to pursue a claim of damages if subsequent use results in damage or injury to people or property.

I, the undersigned Seller, or authorized representative of Seller, do hereby acknowledge receipt and understanding of the aforementioned specifications and conditions.

Seller's Name: _____

Company Name: _____

Address: _____

City/State/Zip: _____

Phone: _____ **Fax:** _____

E-Mail: _____

Signature: _____

Title: _____

Radiation Detection Equipment

Model#: Hand Held: _____ **Truck** _____ **Rail** _____