
CMC Information Technology

CMC Clientless SSL User Guide

June 25, 2009

Version 1.1

Author: Bob Reichardt

Modified:

CMC Clientless SSL Web Portal - User Guide

1 Clientless Web Portal

The Clientless web portal is internet browser based. This portal will provide access to email, internal corporate web sites, and various other applications. The first thing to do is load your internet browser and then add one of the links below to the address bar or just click on the links below. This document will provide information concerning the navigation of the web portal.

Connect to the internet

Connect to <https://am.cmc.com>
Or <https://emea.cmc.com>
Or <https://asiapac.cmc.com>

Note: The above URLs will not work from the business network (internal)

Or

Go to <http://www.cmc.com> and click on the myCMC menu item.



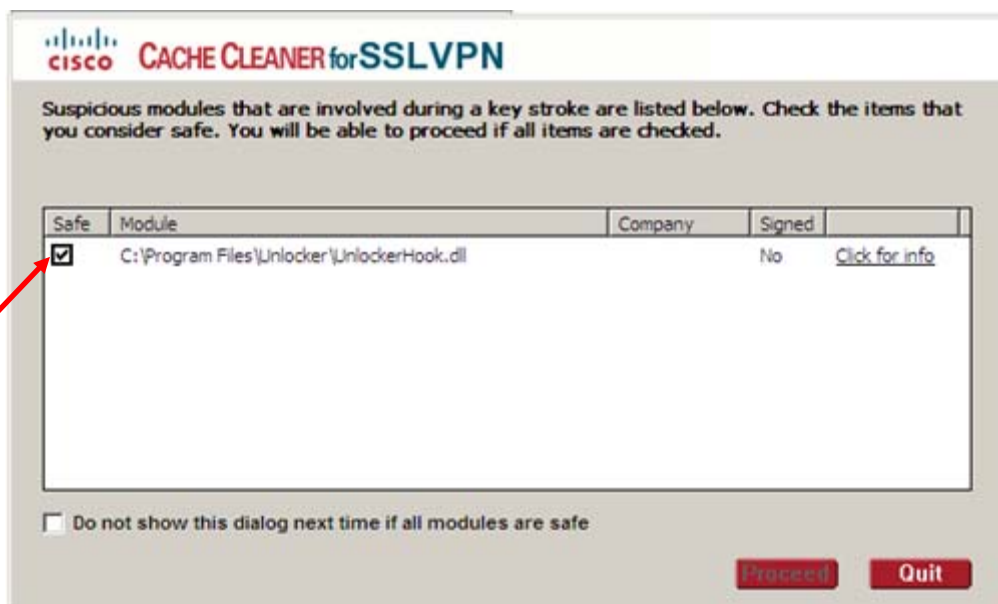
This is another way to access the URLs

CMC Clientless SSL Web Portal - User Guide

2 First Screens to be observed



After clicking on one of the above links, you will be presented with the screens in the red circle. This process may take a minute or two to complete depending on the speed of the computer. The server is verifying the patch level and whether you have a Antivirus running and whether any keyloggers exist.



This screen may be presented showing possible keyloggers on the computer. **Take a screen shot of this window and send to EIG_Security@cmc.com.** EIG Security will

CMC Clientless SSL Web Portal - User Guide

evaluate the files displayed and place into an exception list if it is determined the files are not keyloggers. If you feel the files are not keyloggers, then place a check mark in the box to the left of the file and click on the proceed button.



The screenshot shows a login window with a dark header containing the text "Login". Below the header, the instruction "Please enter your username and password." is displayed. There are two input fields: "USERNAME:" and "PASSWORD:". Two red arrows point to the left of each input field. Below the input fields is a "Login" button.

You will be presented with this login window. Use the following format to login → domain\username (e.g. csgau\TestUser). This only applies to users in the legacy domains. If you have been migrated to the CMCo domain, then you only have to input your username and do not have to have the domain in front of it, like the legacy domains.

CMC Clientless SSL Web Portal - User Guide

Outlook Web Access (OWA)

Commercial Metals Company **SSL VPN Service**

Home
Web Applications
Browse Networks
MetaFrame Access
VNC Connections
Telnet/SSH Servers
Terminal Servers

Address

Web Bookmarks

- [CMC Global Net](#)
- [CMC Home](#)
- [Remedy Ticketing System](#)
- [Outlook Web Access](#) ← 1 – CMC Co Domain eMail
- [CMC](#)
- [Outlook Web Access](#) ← 2 – Commercialmetals eMail
- [CommercialMetals.com](#)
- [OutLook Web Access](#) ← 3 – Steel Group SouthEast eMail
- [Steel Group - SouthEast](#)
- [Outlook Web Access](#) ← 4 – Steel Group SouthWest eMail
- [Steel Group - SouthWest](#)
- [Email Spam Filter \(MailMar](#)
- [MailMarshal](#)
- [Sarbanes Oxley](#)
- [Sarbanes Oxley Portal](#)

This screen is the home page of the portal. From here, you have access to various web sites, including Outlook Web Access (OWA). Click on one of the links and the web page will open.

There are 3 different OWA links on this page. Select the link corresponding to the domain you are a member of. The arrows above indicate the email options available. Arrow 1 points to the OWA for the CMC Co domain. Arrow 2 points to the OWA for the CMC domain. Arrow 3 points to the OWA for the Steel group Southeast, and the fourth arrow 4 points to the OWA for the Steel Group Southwest.

The menu above have links for the following applications:

1. CMC Global Net for Commercial Metals Company
2. CMC Home -> Sharepoint (Intranet Sites)
3. Outlook Web Access → 1. cmc.com
4. Outlook Web Access → 2. Commercialmetals.com
5. Outlook Web Access → 3. Steel Group SouthWest
6. Outlook Web Access → 4. Steel Group SouthEast
7. eMail Spam Filter → Mailmarshal
8. Sarbanes Oxley → Sarbanes Oxley Portal

CMC Clientless SSL Web Portal - User Guide

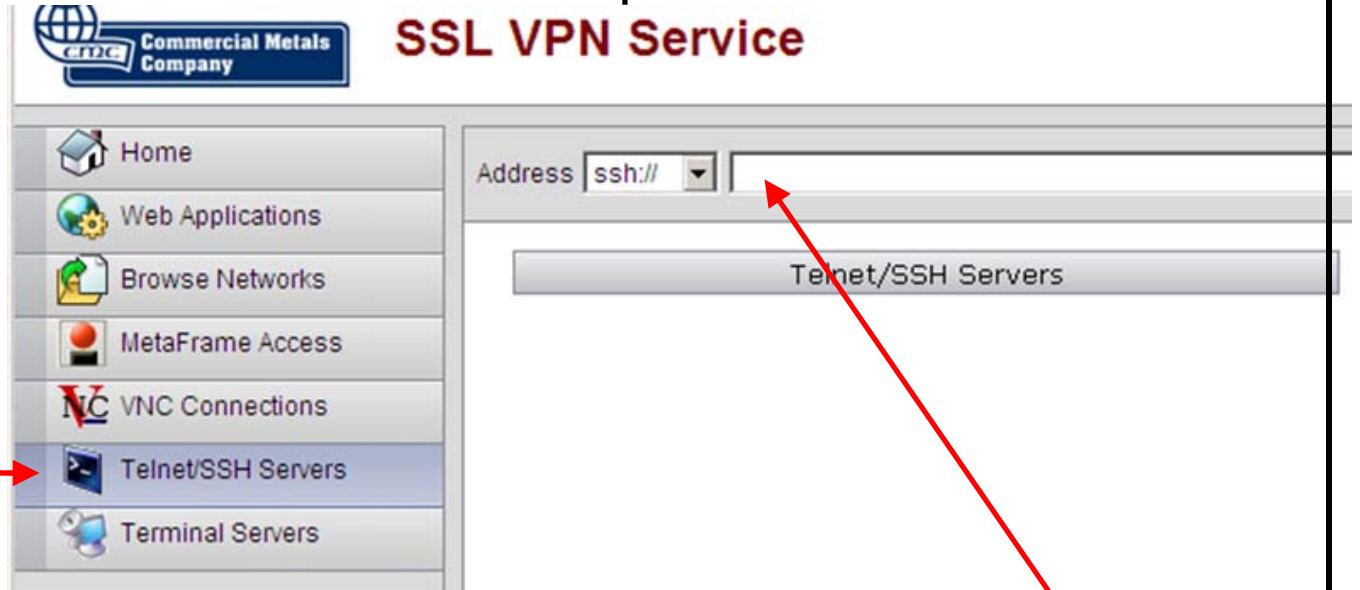
3. MetaFrame Access (Citrix)



Enter the URL for the Citrix server here and login. (Your local IT team may have this information for you)

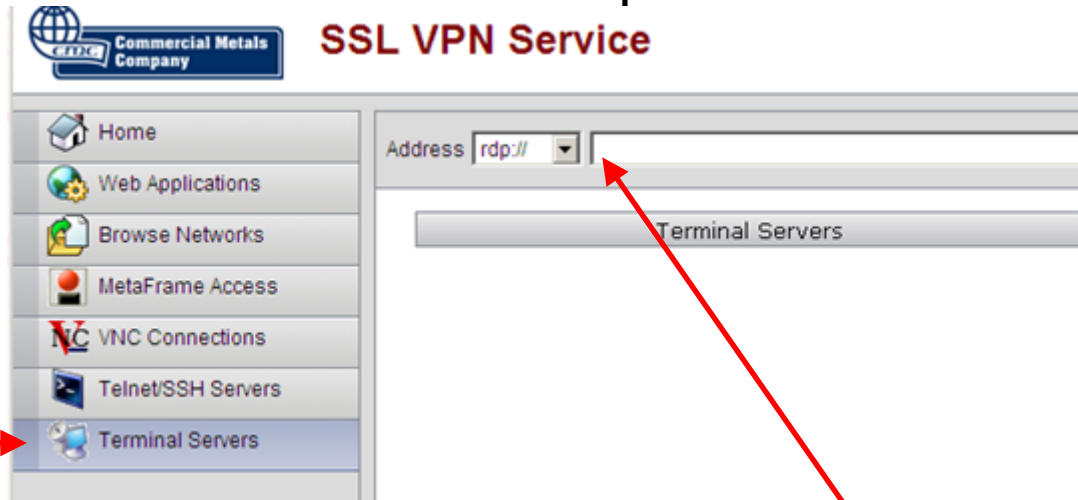
CMC Clientless SSL Web Portal - User Guide

4. Terminal Servers – Remote Desktop Protocol



Enter the address of the device you want to do an SSH connection to here.

5. Terminal Servers – Remote Desktop Protocol



Enter the address of the server you want to connect to here.

CMC Clientless SSL Web Portal - User Guide

6. Navigation Keys

These navigation keys will appear in the upper right hand corner of the window anytime you are away from the main window shown below.

Main Window



Main window

Navigation keys



Logout

Go to home page

Go to Address – When this icon is clicked, another window will open allowing you to enter a URL to navigate to.

Move this menu to the other side of page